

CFS3 (variants)

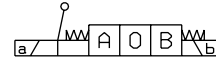
"LF", "LR" AND "LV" VARIANTS - EMERGENCY CONTROL LEVER



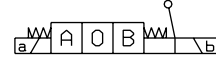
Thanks to his flexibility, the component is designed to be inserted between the valve body and the spool, providing total interchangeability between the different types of solenoid body valves manufactured by Dana Brevini (*). The control can be used as an emergency device in the event of power cuts.

HYDRAULIC SYMBOL

Var. LF/LR lever on the side A:



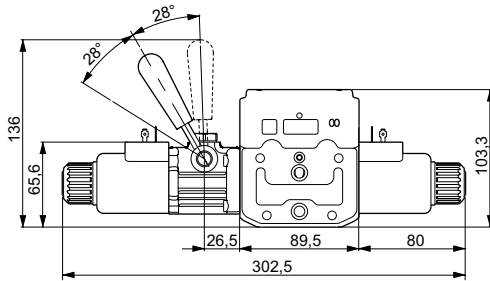
Var. LV lever on the side B:



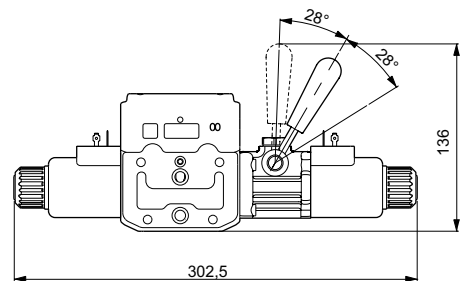
Max operating pressure port T	dynamic	160 bar
	static	210 bar
Mounting type Var. LF/LR		C - B
Mounting type Var. LV		C - A
Spools type		01 - 03

* Max flow of proportional valves can be reduced compared to versions without emergency control lever when electrical operated. Max flow of proportional valves lever operated is increased compared to the max flow given when valves are electrical operated.

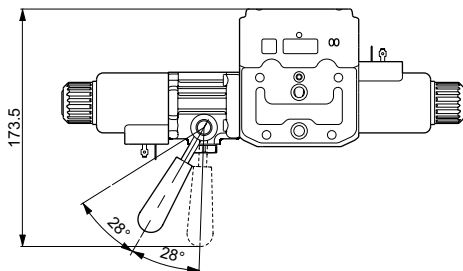
LF Variant



LV Variant



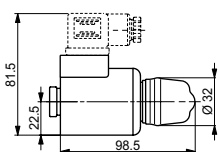
LR Variant



OTHER VARIANTS

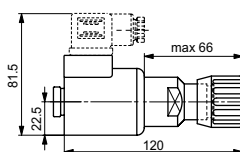
"ES"

Manual emergency



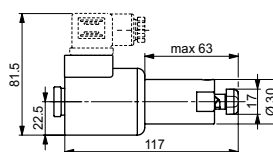
"P2"

Rotary emergency



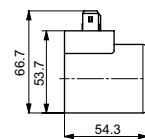
"R5"

Rotary emergency 180°



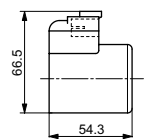
"AJ" AMP Junior

"AD" AMP Junior + Diode



"CZ"

Deutsch DT04-2P



Emergency P2 and P5, tightening torque max. 6÷9 Nm (CH n. 22)