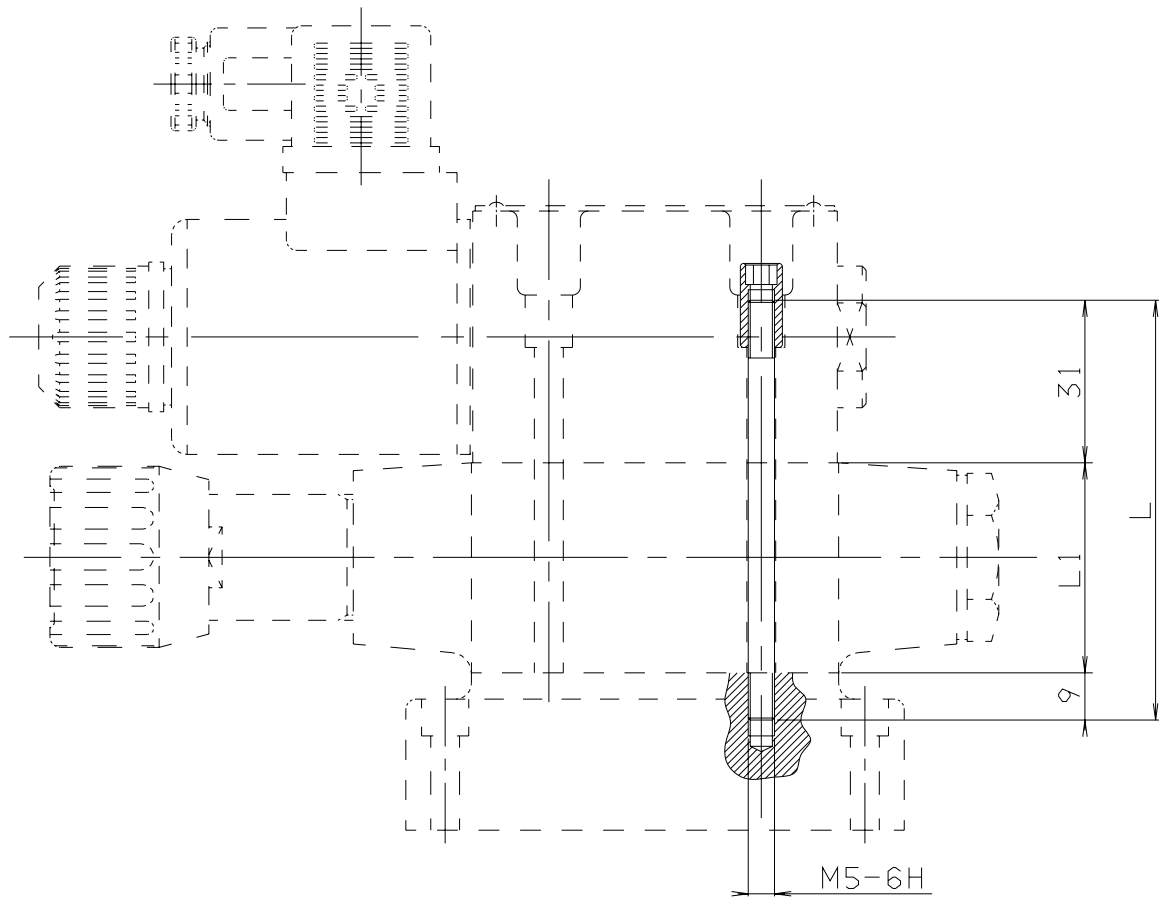


# TABLE OF SCREWS AND STUDS FOR MOUNTING MODULES CETOP 3

## OVERALL DIMENSIONS

Tighten M27.05.0001 to a torque of **5 Nm / 0.5 Kgm max.**



4

SCREWS T.C.E.I CODE	L mm	L1* mm	COMPOSITION	Q.TY	SPECIAL NUTS CODE
Q26074068	30	—	AD3...	4	—
Q26074075	70	40	AD3... + 1 AM3... (ISO)	4	
Q26074076	75	45	AD3... + AM3VR	4	
M80100015	97	57,5	AD3... + AM3VI...	4	V89240000 (No. 20 nuts kit)
M80100007	115	74	AD3... + A66 o AM66...	4	
M80100003	120	80	AD3... + 2 AM3... (ISO)	4	
M80100013	125	85	AD3... + AM3VR... + AM3... (ISO)	4	
M80100011	155	114	AD3... + A66... + AM3... (ISO)	4	
M80100005	160	119	AD3... + A66... + AM3VR	4	
M80100005	160	120	AD3... + 3 AM3... (ISO)	4	
M80100020	165	125	AD3 + AM3VR + 2 AM3... (ISO)	4	
M80100017	170	130	AD3 + AM3CP + 2 AM3... (ISO)	4	
M80100023	195	154	A66... + 2 AM3... (ISO)	4	

\* Indicative overall dimensions valves composition