

## INTERMEDIATE ELEMENT WITH PILOT OPERATED CHECK STACKABLE VALVES

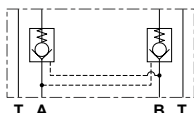


- Modular pilot operated check stackable valves V08000002
- Intermediate mounting to combine with valves CM3F/CM3M
  - Double A and B lines;
  - Cast iron zinc plated body.

### FEATURES

Max. operating pressure	250 bar
Minimum opening pressure	5 bar
Max. Flow	20 l/min
Hydraulic fluid	DIN 51524 Mineral oils
Fluid viscosity	10 ÷ 500 mm <sup>2</sup> /s
Fluid temperature	-25°C ÷ 75°C
Ambient temperature	-25°C ÷ 60°C
Max. contamination level (filter $\beta_{25} \geq 75$ )	ISO 4406:1999: class 21/19/16 NAS 1638: class 10
Weight	0.69 kg

### HYDRAULIC SYMBOL

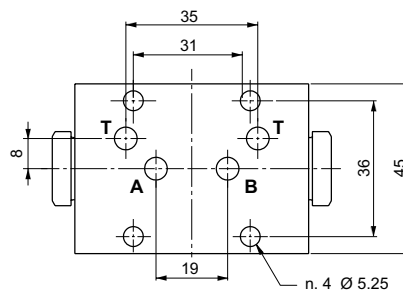
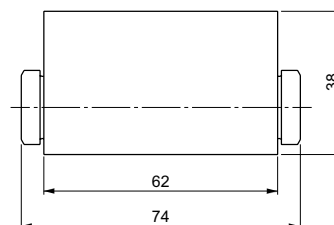


### ORDERING CODE

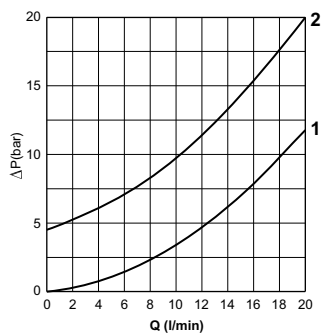
V08000002

Pilot operated check stackable valve

### OVERALL DIMENSIONS



### FLOW REGULATION



- 1 = piloted side flow  
2 = minimum opening pressure